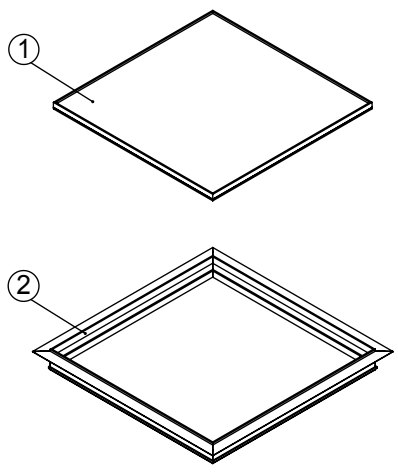
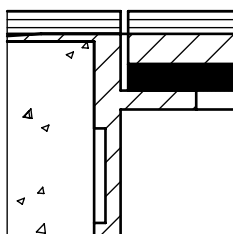
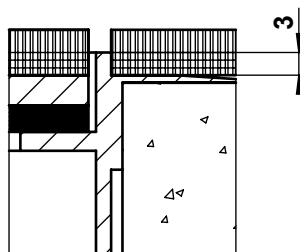


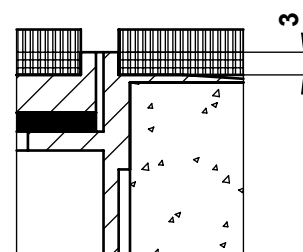
| | dimensioni l x l / ... | BRECO no. art. | descrizione | POT - 7 |
|---|---------------------------|-------------------|--|---------|
|  | 240 x 240 / s | 11250 | ① coperchio senza o con protezione vedi dettaglio s / c / c 2 | |
| | 300 x 300 / s | 11310 | | |
| | 350 x 350 / s | 11360 | | |
| | 240 x 240 / c | 12250 | ② telaio in alluminio estruso senza o con protezione vedi dettaglio s / c / c 2 scatola provvisoria a richiesta | |
| | 300 x 300 / c | 12310 | | |
| | 350 x 350 / c | 12360 | | |
| | 240 x 240 / c 2 | 13250 | - altezza minima 55 mm - altezza massima 300 mm ... = dettaglio s / c / c 2 | |
| | 300 x 300 / c 2 | 13310 | | |
| | 350 x 350 / c 2 | 13360 | | |



dettaglio s



dettaglio c



dettaglio c 2

